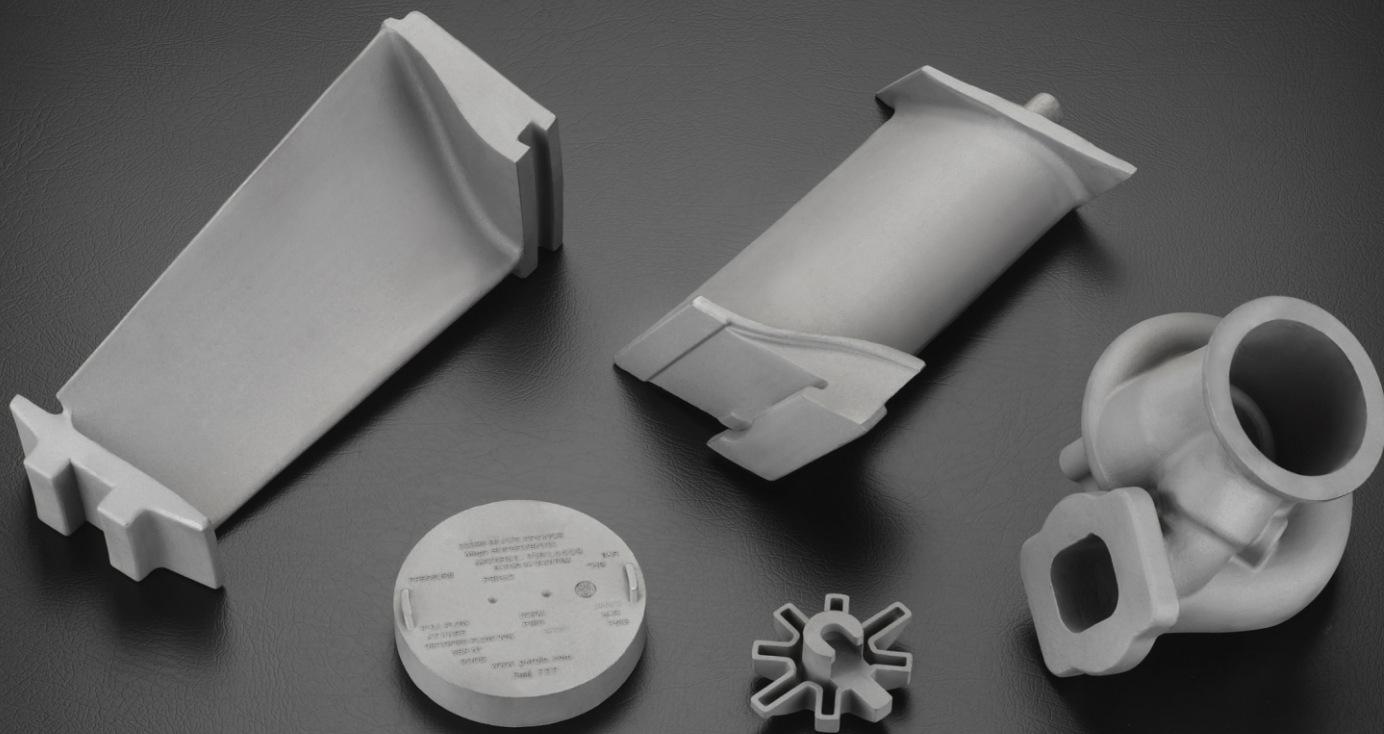




**PRECISION**  
TECHNOCAST PVT. LTD.

Manufacturer & Exporter of Investment Casting(Lost Wax) of Ferrous, Non-Ferrous and Super Alloys



## TURBINE PARTS

### About Us

Precision Technocast Pvt. Ltd. - was established in 2006 to manufacture Investment Castings using the lost wax process and started production in 2007. Within the short span of time PTPL has earned good reputation in Investment Casting for prompt delivery, casting Tolerances, Surface finish, Chemical & physical properties.

In year 2018 Precision Technocast Pvt. Ltd. has received PED 2014/68/EU & AD 200 W0 from TUV Nord to meet all international quality procedure. We strive to set the industry standard for on time delivery, quality and customer service. To achieve all these needs, we have state of art facilities and expertise to back our commitment.

Our Plant spans with total area of land 35000 sq. Feet with a Production Area of 30000 Sq. Feet and is equipped all modern machinery.

No project is overly ambitious or complicated. Our experienced personnel are committed to teamwork, and insuring that the customer is involved in every step of a projects development.

**Our Speciality in Ferrous as well as Non-Ferrous Metals**

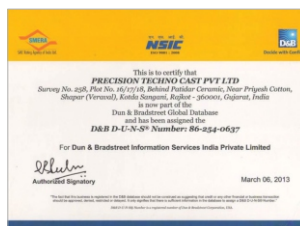
### Certifications



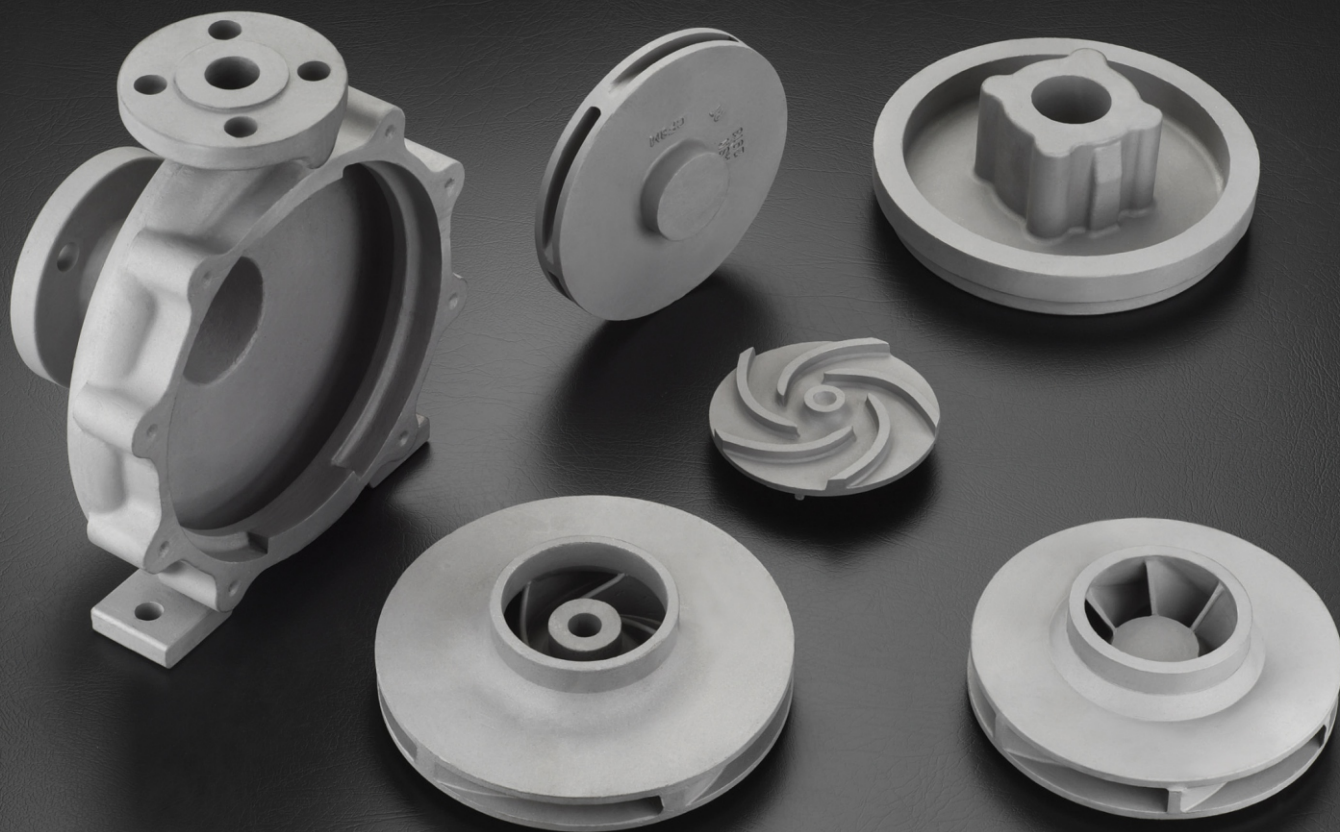
AN ISO 9001:2015 CERTIFIED COMPANY



PED 2014/68/EU&AD 2000 W0



Precision Technocast Pvt. Ltd.



## CHEMICAL PUMP PARTS

### Quality Assurance

The Precision Technocast private limited believes that our customer satisfaction is above all. We will strive to achieve our customer satisfaction by providing quality investment casting and services. We will do continual improvements in our quality management system by full filling our quality objectives. For customer satisfaction we are also doing 3rd party inspection in NABL approved Lab.

We are also doing ultra testing and radiography testing.

We are committed to comply our quality management system as per ISO 9001 : 2015 std. and PED 2014/68/EU & AD 200 WQ,

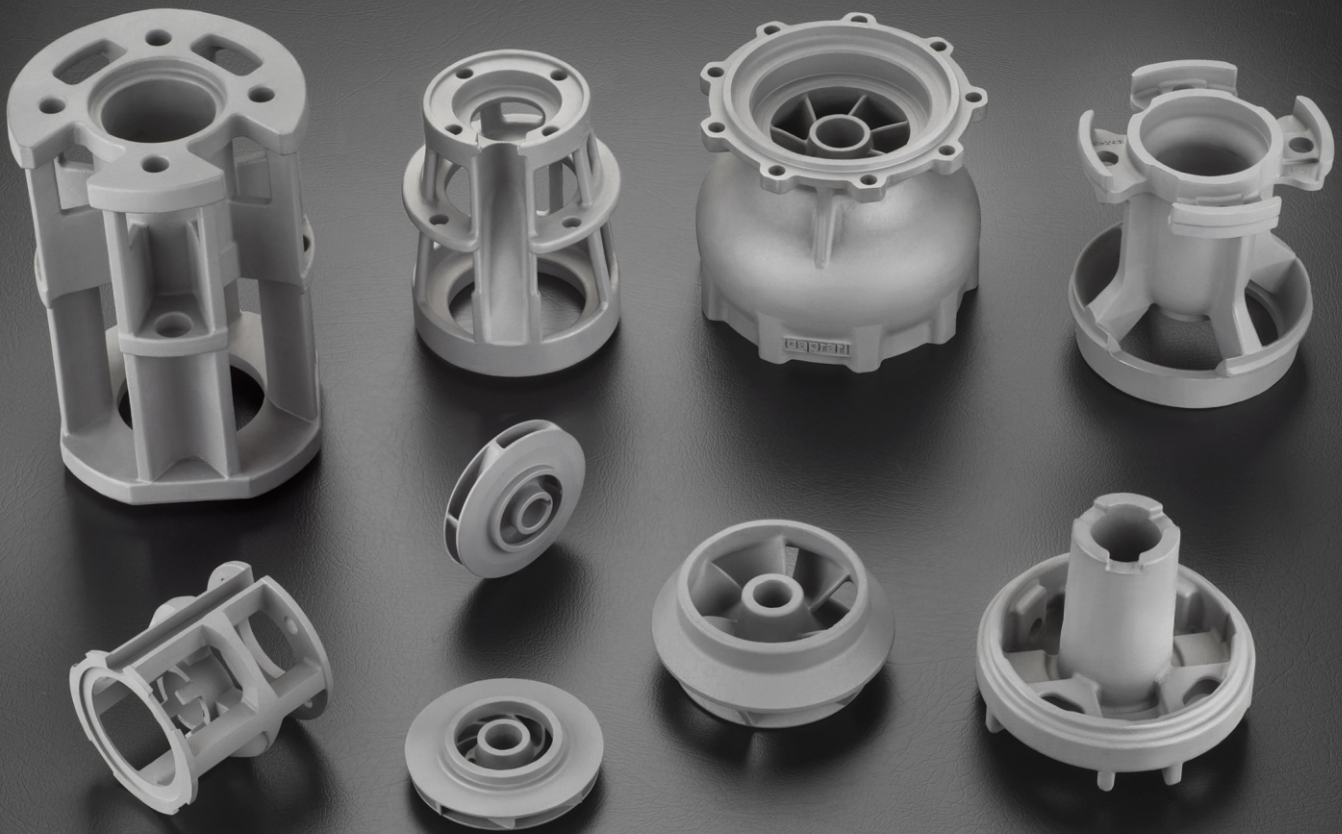
Our Quality control department is equipped with the following instruments :

- Spectrometer for analysis of Chemical Composition of the castings.
- Metallurgical Microscope.
- Hardness Testing Machine.
- Pneumatic Pressure Testing &
- Hydraulic Pressure Testing.
- Universal Testing Machine.
- Dye Penetrate Testing.
- Surface finish measuring Instrument.
- All type of Measuring Instruments.

All the instruments & equipments are regularly been calibrated as per the standards of quality system of the company.



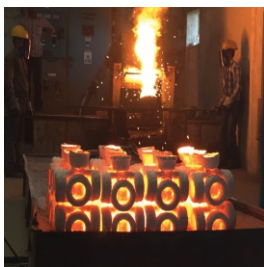


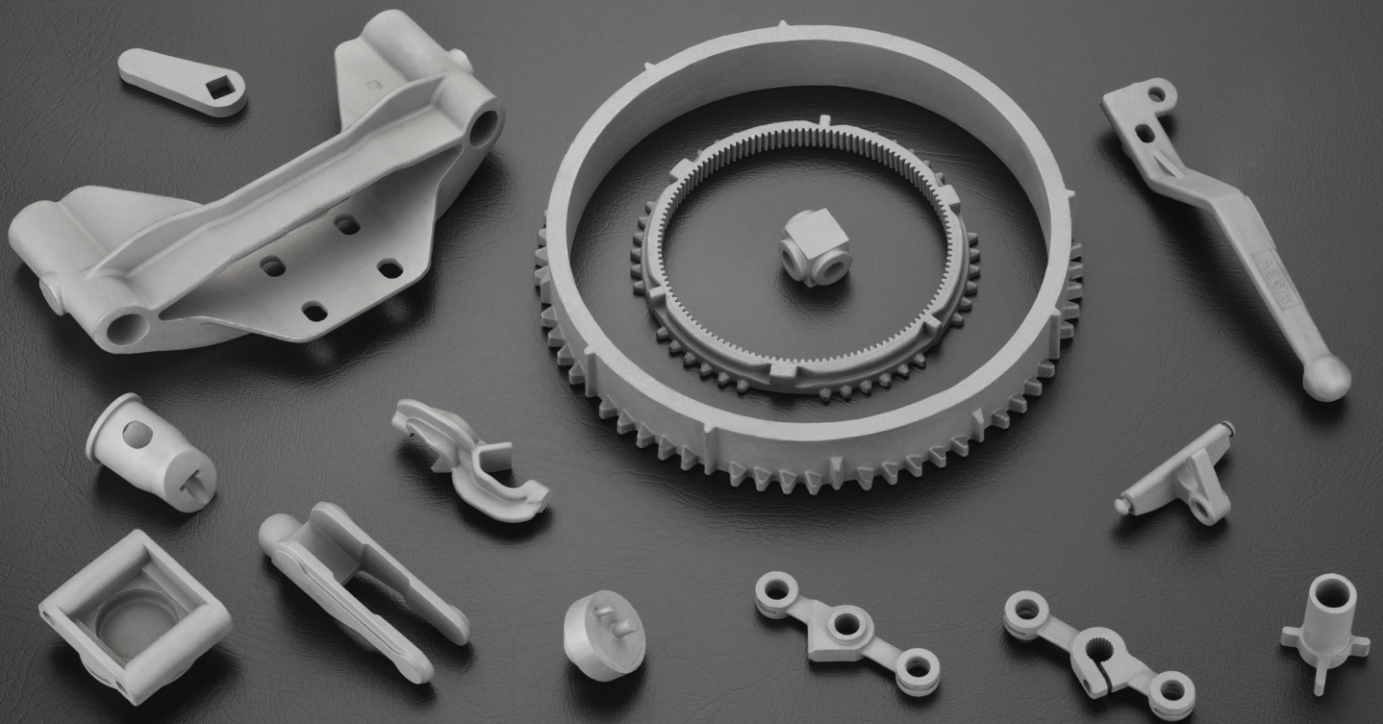


## PUMP PARTS

### Process

Tool Development	: Tool established for making wax pattern
Wax Pattern Manufacturing	: Output of wax injection from tool
Pattern Assembly	: Attachment of pattern with feeders
Ceramic Coating	: Application of coating with binder & stucco
De - Waxing	: Removing wax from coated assembly
Shell Breaking	: Pre-Heating of shells
Induction Melting	: Preparation of molten metal
Verification of Chemical Composition	: Ensuring by Spectrometer
Pouring	: Filling the shell with molten metal
Flattening	: Detachment from feeders and surface finishing
Stress Reliving	: Setting the homogenous structure of metal
Inspection and Testing	: Verification of casting with customer's requirement





## AUTOMOTIVE PARTS

### Product Capabilities

**Weight :-** From 5 Gm. to 200 Kg. as a single piece  
**Maximum Size :-** 1000mm x 750mm x 750mm  
**Dimensional Accuracy :-** According to VDG P690  
**D1 accuracy level or IS :-** 11166 class II  
**Surface Roughness :-** 4 to 6  $\mu$ m Ra  
**Production :-** 40 Mt./Month  
**Spare :-** 15 Mt./Month  
**Materials Offered :-** Austenitic Stainless Steel,  
 Carbon Steel, Low Alloy Steel, Super Alloy Steel,  
 Martensitic Stainless Steel, Duplex steel,  
 Precipitation Hardened Steel, Cast Iron

### Dimensional Tolerances

These tolerances apply as general. Closer tolerances can be achieved depending up on part geometry and application of component.

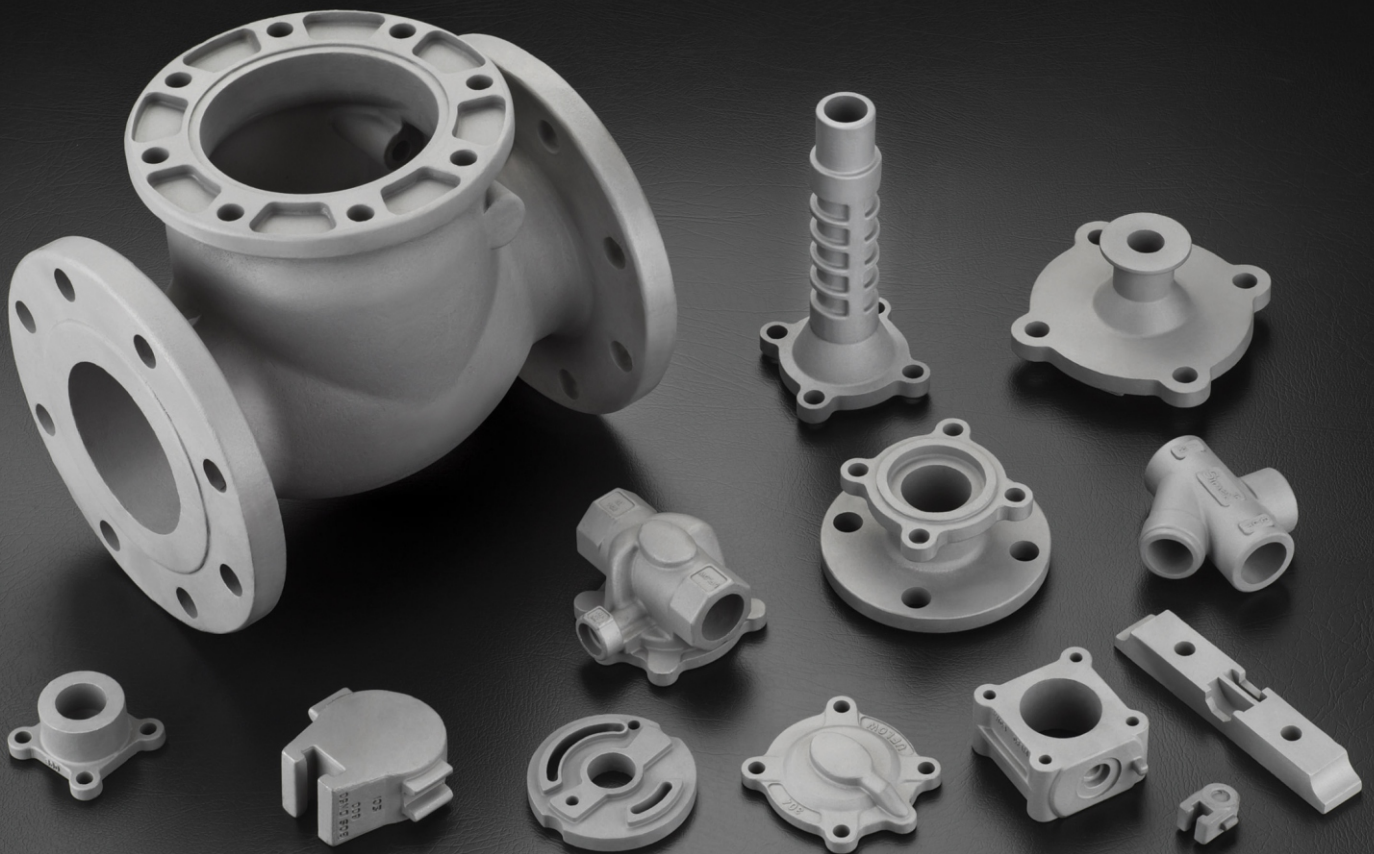
Up to 25mm	-+0.12mm
25 to 50mm	-+0.25mm
50 to 75mm	- + 0.38mm
75 to 100mm	- + 0.50mm
100 to 125mm	-+ 0.62mm
125 to 150mm	-+ 0.76mm

### Product Application

Pump	Valve	Automotive
Food Processing	Machine Tools	Textile
Dairy Fittings	Turbine Blades	Boiler Parts
Earth Moving Machinery	Defence	Medical Implants
Marin Application	Aerospace	Power Plants
Stuctural Hardware	Automation	General Engineering







## VALVE COMPONENTS

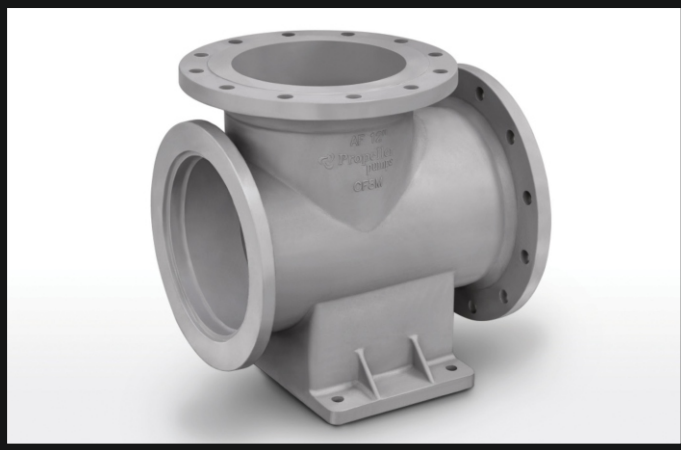
### Precision Technocast Offer Following Services

- Design Assistance.
- Prototypes through production.
- "Surface texture includes roughness, waviness, lay and flaws," as defined in ASA B 46.1.1962.
- Surface finish varies from 60 to 125 Max. RMS(Root Mean Square).
- Cast in accordance with ASTM, AMS, AISI, DIN, GOST, JIS, B.S., SAE, IS specifications.
- Chemical Analysis through Spectrometer and Physical Analysis.
- Heat Treatment using Electric Furnace.
- All kind of In-house testing.
- Machining.
- Finishing Operations.

### In-House Machining Shop

- CNC TURNING LATHE
- MILLING
- VTL
- VMC
- RADIAL DRILL
- CONVENTIONAL LATHE
- HYDRAULIC TAPPING MACHINE
- PRESSURE TESTING

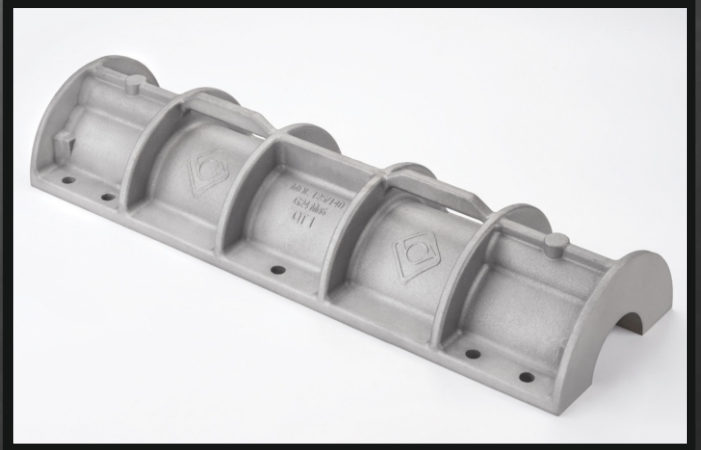




Size : L-900mm x W-265mm x H-150mm

Weight : 80 Kg

Testing : Radiography NSD Level OK.

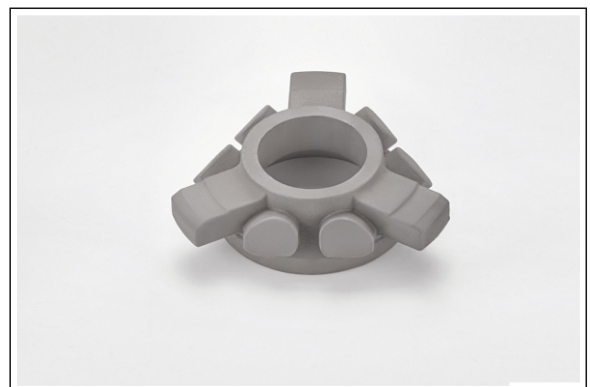
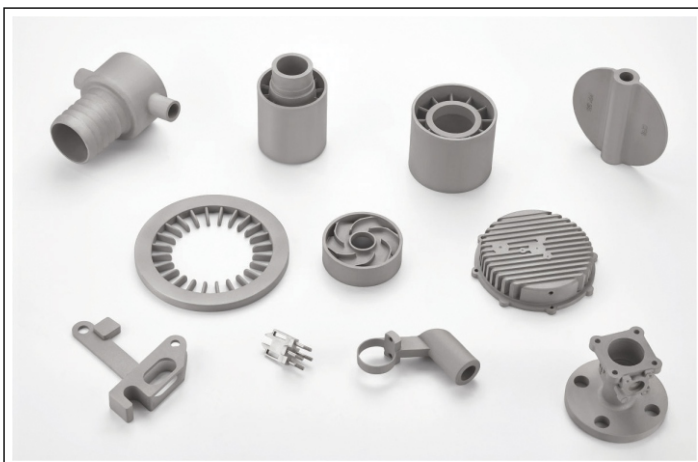
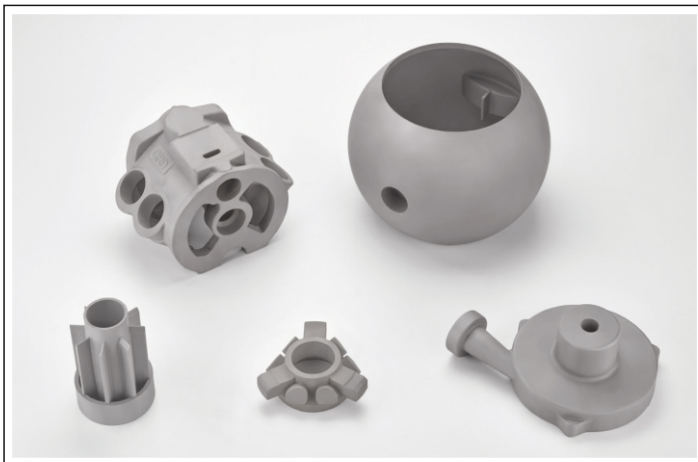


Size : L-600mm x W-600mm x H-720mm

Weight : 200 Kg

Material : Hastelloy B, Hastelloy C  
Alloy 20, Super Duplex

## OUR SPECIAL PRODUCTS



Precision Technocast Pvt. Ltd.



## Precision Technocast Pvt. Ltd.

📍 SURVEY NO. 258, PLOT 16-18, B/h. PATIDAR CERAMIC, Nr. PRIYESH COTTON,  
Village : Shapar (Veraval), Rajkot (Guj.-INDIA) - 360 024,

☎ +91-90991 11796

✉ [info@precisiontechnocast.com](mailto:info@precisiontechnocast.com)

🌐 [www.precisiontechnocast.com](http://www.precisiontechnocast.com)